



How is EZ Fan packaged?

Order Code	EZ Fan(REF_01KR)	
	Dimension	Weight
Packaged Device	220 X 330(mm)	36g
Inner Box for 5unit	202 X 277 X 48(mm)	256.11g
Outbox for 100units	515 X 420 X 300(mm)	5.5kg

Deliver the dream

No-Bowl & No-Touch Technique

EZ Fan

Sterile, single use instrument for the delivery of gel implants.



KIMS MED

#112 #214, Bio-Medical Material and Component Service Center,
Gwangju Techno Park, 249, Chuam-ro, Buk-gu, Gwangju, 61003,
Republic of Korea
T. +82 70 5208 5257 F. +82 70 8611 3022
E. info@kimsmed.com W. www.kimsmed.com

EU REPRESENTATIVE

Certification Experts B.V.
Amerlandseweg 7, 3621 ZC Breukelen, The Netherlands

KIMS MED



How to use “EZ Fan”?



HYDRATE

LOAD

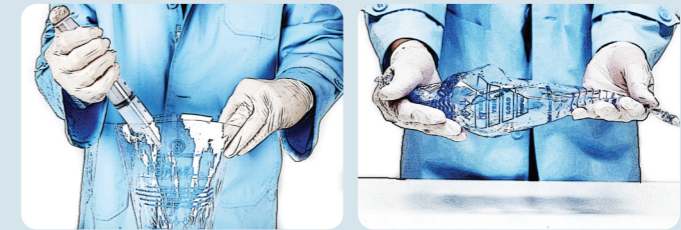
TRIM

PROPEL



HYDRATE THE FUNNEL

Hydrate the funnel with saline through the open end of the funnel. Close the open end of the funnel by hand to contain the saline and rotate back and forth to fully hydrate the internal surface. Once complete pour the remaining saline into a container using the open end of the funnel.

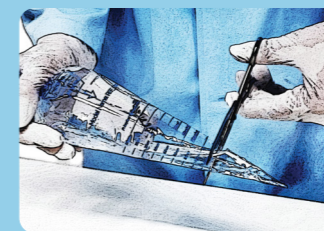


LOADING THE FUNNEL

The implant is loaded in the hydrated funnel. Round implants are placed directly into the funnel from the packaging, for what is called a “No-Touch technique.” If you are using anatomical or shaped implants, the surgeon will load them into the funnel by hand, to ensure proper direction and orientation of the implant prior to placing it in the body. This is called a “Minimal-Touch technique.”



TRIMMING THE FUNNEL



Trim the funnel tip to accommodate the size, type and shape of the implant being used.

Information to trim the EZ Fan funnel

Smooth Round	Textured Round
Moderate&Moderate Plus : as shown	Moderate&Moderate Plus : +1.5cm larger
High Profile: +0.5cm larger	High Profile: +2cm larger
Ultra High Profile: +1cm larger	Ultra High Profile: +2cm larger
Anatomical / Shaped Implant +2cm larger	



PROPEL THE FUNNEL

Gently propel the implant through the funnel into the surgical pocket.

What is “EZ Fan”?

“EZ Fan” is specifically designed to satisfy the needs of the surgeons who want an alternative to the traditional finger insertion method for breast, calf, gluteal and pectoral shaped gel implant procedures.

What is the indication for “EZ Fan”?

EZ Fan is indicated to deliver gel implants into the pocket with minimal or no touch of the implant, surrounding tissue and the incision.

What are the advantages from “EZ Fan”?

- Employ a No-Touch / Minimal-Touch technique believed by respondents to reduce infection rates
- Shorten incision lengths
- Reduce operating room time
- Reduce force applied to the implant shell, which may lessen damage occurrence
- Increase placement options
- Can accommodate all types of gel implants
- Less friction, faster propulsion of implant
- Superior visualization of implant